



in this issue :

Burning Down the House

NA Engineering Associates Inc. works to extend the life of a training facility that keeps getting set on fire.

[See page 2](#)

Preserving a Parking Space

NA Engineering Associates Inc. works to keep multi-level parking structures in their best condition.

[See page 3](#)

We are on Social Media!



To become our friend on facebook:
[CLICK HERE](#)



To follow us on Twitter:
[CLICK HERE](#)

We ask you to consider the environment before printing this document.

A View From the Top

NA Engineering Associates Inc. provides consulting services for specialized re-roofing projects.

For the past fifteen years, NA Engineering Associates Inc. has provided professional roof consulting services on a wide variety of complex and exciting projects. This work has included condition assessments, the preparation of specifications and tender documents, as well as field review and construction administration. In some cases, our firm has been asked to conduct condition surveys for roofs as large as 3 million square feet.

On several roof-consulting projects, we have been asked to incorporate other important skill-sets of our firm. On projects for nuclear sector clients – such as Bruce Power LP - we have been able to mix our knowledge of the standards and regulations of the nuclear industry with our pragmatic approach to roof consulting services. Pictured above is the 450,000 square foot B10 Support Center, which was completed in 2005. NA Engineering Associates Inc. undertook the roof and building envelope consulting services for this facility which houses most of the site administrative and professional staff.

Currently, NA Engineering Associates Inc. is consulting for AECL Chalk River Laboratories for a roofing project at the Douglas Point Waste Management Facility. AECL is an industry leader in safety and have retained our firm to review a number of key elements in preparation of a re-roofing project later this year.

The Douglas Point Waste Management Facility project involves an inspection and evaluation of the railings for the Douglas Point reactor dome, an assessment of safe work access to the roof, load testing of roof anchorages and preparation of safe work procedures.



NA Engineering Associates Inc. Attends the Annual CNA Conference & Trade Show in Ottawa

The Canadian Nuclear Association annual Conference and Trade Show was held in Ottawa from Feb 27 to March 1, 2013 in Ottawa ON. NA Engineering Associates Inc. was in attendance and had our information booth.

Our managing partner, Nick Aroutzidis (Pictured [left] with partner Larry Walton), is also a board member with the CNA having been elected to the position in 2012. The conference included a number of workshops and dialogue forums on such topics as industry refurbishment projects, nuclear innovations and the evolution of safety practices. Dr. Joe MacInnis, Titanic and Ocean Explorer, was on hand for the Friday breakfast session to speak of accelerating leadership and the power of endurance linking performance under the ocean to the business world.

Burning Down the House

NA Engineering Associates Inc. works to extend the life of an iconic London fire-training facility.

NA Engineering Associates Inc. was asked to assess City of London Fire Department's fire training tower, located on Wellington Road South, to determine if the structure can be expected to remain functional for another 12 years.

The tower was originally constructed in 1981 and is of lightweight concrete block walls and cast in place concrete floor and roof slabs. The structure has withstood years of thermal shock from Class A fuels during training exercises and exposure to the elements. However, attention and an effective maintenance schedule, combined with on-going structural reviews by NA Engineering Associates Inc., have kept the tower in working condition.

To help prolong the usable life of the tower, the City of London and the Fire Department would like to discontinue the current practice of burning Class A fuels during training evolutions in favour of implementing gas-fired training simulators.

NA Engineering Associates Inc., with consultation from Elliott LeBoeuf & Associates, assessed the feasibility of installing gas-fired simulators and the advantages and disadvantages of the various simulator options available.



Preserving a Parking Space

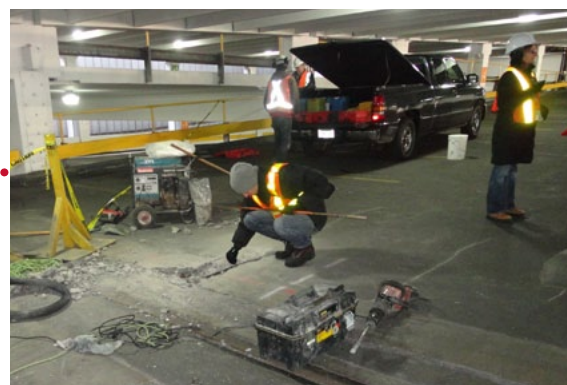
Our firm works to keep multi-level parking structures in their best condition.

When land space is at a premium in urban centers, a common solution is to employ multi-level, reinforced concrete parking garages. The care and maintenance of these complex structures is an important and involved task.

NA Engineering Associates Inc. has been working on several of these facilities in recent months. We recently completed a comprehensive investigation of a 1,500-car parking structure in Toronto, including inspections of structural elements, post-tensioning cables, guards as well as preparation of design details, specifications and tendering packages for restoration work.

Another client retained NAE to perform a similar inspection at a London garage. This work involved provision of an inspection report for walls, elevated slabs, columns and including concrete coring.

In addition to this work, we have undertaken two recent inspections of similar structures for clients in London.



NA Engineering Associates Inc. Supports Children of the Canadian Sunshine Foundation

NA Engineering Associates Inc. continues to incorporate the 'Dress Down Friday' fund-raiser into the weekly schedule to support local charities. This initiative allows staff to dress casually on the last day of the working week with a minimum donation of \$2/ person.

Over the past year, the Stratford, London, and Kincardine offices collectively raised \$2027.50 -- which the company matched -- making a total contribution of \$4055.00!

These funds have been donated to The Canadian Sunshine Foundation, which provides individual dreams to children with severe physical disabilities as well as life-threatening illnesses.

Darlington Energy Complex Refurbishment

NA Engineering Associates Inc. has an exciting new project.

NA Engineering Associates Inc. prepared the conceptual designs for all disciplines along with the specifications and technical content for the Request for Proposal for the new Darlington Energy Complex in Clarington, Ontario. Additionally, we acted on behalf of the Owner Ontario Power Generation (OPG) as the design oversight agent for the project.

Our long-standing relationship with the Real Estate Division at OPG has resulted in the completion of many projects and properties it manages including this new LEED Silver Certified state-of-the-art facility. This multi-purpose building of more than 300,000 square feet will include office space for 450 staff, and a public information centre with interactive educational displays, and a 160-seat auditorium. It will also have an employee processing centre and warehousing space to manage the people and material needed for the refurbishment project.

The Darlington Energy Complex will be a key element to the success of the Darlington Refurbishment Project and will support ongoing operations of the Darlington station into the future.



The Power of 3D Modelling

As part of the ongoing refurbishment project, NA Engineering Associates Inc. has been asked to create specialized 3D mock-ups to train staff.

In support of the ongoing refurbishment project of at the Darlington Nuclear Generating Station, NA Engineering Associates Inc. was retained by Aecon Industrial to conduct the drafting and modeling of several key mock-ups used to train staff. SNC Lavalin is the prime consultant and is responsible the overall mockup design and acceptance of NAE design packages.

The training is conducted at the Darlington Energy Complex (see above), where staff are trained in a full scale setting designed to simulate the conditions of working inside the protected nuclear area with none of the associated hazards.

NA Engineering Associates Inc. is performing the structural assessments of the mock-ups as well as drafting, rendering and modeling of the parts. Fabrication is starting up shortly with assembly scheduled to begin later in 2013.





The NA Engineering Associates Inc. Winter Classic

Friends and family gather for one of the company's favorite annual traditions.

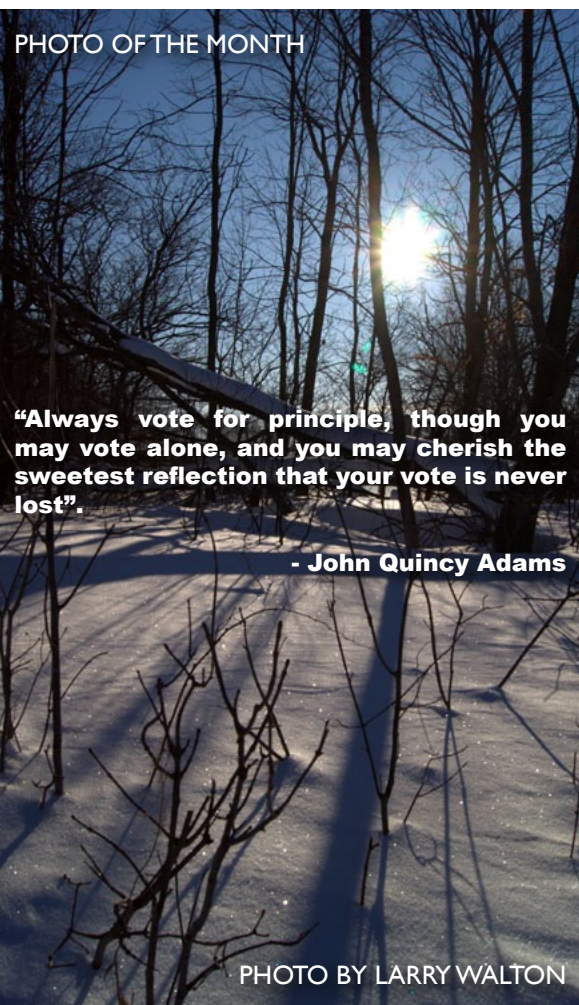
In mid-January of this year, a group of NA Engineering Associates Inc. employees, friends and families gathered at the Walton Ice Palace in Kincardine, Ontario to celebrate our great Canadian pastime.

Mother Nature provided some light snow to accentuate the BBQ lunch and traditional burn-barrel campfire. The final score was not officially tallied but it is believed that the Kincardine Area squad whopped the visitors from Stratford and London. Now that this event is in the books, winter is welcome to depart at any time!

Check Out Our New Website!

NA Engineering Associates Inc. has just re-done their corporate website. [CLICK HERE](#) to visit our new site.

PHOTO OF THE MONTH



"Always vote for principle, though you may vote alone, and you may cherish the sweetest reflection that your vote is never lost".

- John Quincy Adams

PHOTO BY LARRY WALTON