

NA ENGINEERING ASSOCIATES INC.

NEWSLETTER | VOLUME 10 | ISSUE 3

in this issue:

[FIRE TRAINING FACILITY | CLICK HERE](#)

An update on one of our company's major projects with Bruce Power in Tiverton.

[EMERGENCY GENERATOR SUPPORT | CLICK HERE](#)

We support three different projects in London and Toronto.

[REPLACING A 127 YEAR OLD ROOF | CLICK HERE](#)

Our firm helps update a beautiful historic building's slate roof after more than a century.

[LIFE-SAFETY & CODE CONSULTING | CLICK HERE](#)

An overview of one facet of our services.

[PARKING LOT REHAB & EXPANSION | CLICK HERE](#)

A parking lot in London is improved with our help.

[THE TOWN HALL BELL TOWER | CLICK HERE](#)

We observe the envelope of a historic building.

[A NEW ANIMAL WELFARE CENTRE | CLICK HERE](#)

Our firm designs a new animal welfare centre.


[A DEMOLITION PROJECT FOR OPG | CLICK HERE](#)

We work with E.S. Fox Ltd. and OPG in Tiverton.

[ANNUAL GOLF TOURNAMENT | CLICK HERE](#)

The firm's tournament raises \$20,000 for charity.

NA Engineering Associates Inc.
Stratford | London | Kincardine
www.naeng.com



Proudly celebrating twenty years providing professional services in Ontario



construction continues for bruce power fire training facility

NA Engineering Associates Inc. has been acting as prime consultant for Bruce Power throughout the design and construction of their new Fire Training Facility in Tiverton, Ontario.

The building will be used by Bruce Power's Emergency Response Team to conduct indoor and outdoor training. It will also incorporate live-fire props, able to closely replicate anticipated fire situations.

The project is currently under construction, with the majority of the building's structure nearing completion. Construction of some of the interior building systems is also underway. Construction began in October of 2013, with Alberici Constructors Ltd. acting as General Contractor. The project is tracking to be complete in January of 2015.

As prime consultant, NA Engineering Associates Inc. completed the design work for structural, mechanical, electrical, and civil disciplines on the project -- and also led a team of specialist sub-consultants.

NA Engineering Associates Inc. has been providing full-time field support during the construction phase of the project.

The Facility has been designed to withstand and remove the heat, flame, smoke, and water from repeated live-fire training sessions. When completed, the Facility will be among the largest and most advanced its kind in North America.

[BACK TO INDEX](#)

emergency generator testing and support

On a recent project for Ontario Power Generation, our firm was asked to witness the load testing of emergency generators at both 700 University Avenue and 40 Murray Street in Toronto.

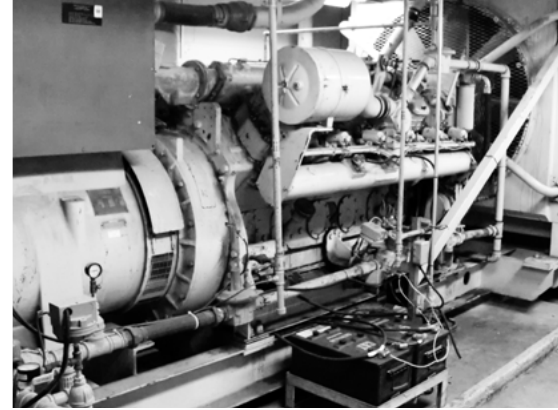
Following the load testing, NA Engineering Associates Inc. prepared a report outlining faults, potential code issues, and possible remediation options.

As part of this report, we also provided OPG with four alternatives to replace the existing generator. Each of these options compared cost benefits, long-term benefits, and feasibility.

On a separate project working for SNC Lavalin Operations & Maintenance Inc. in London, Ontario, our firm provided similar services for the removal and replacement of an emergency generator in a government building at 451 Talbot Street.

During the installation process at 451 Talbot Street, a stand-by generator was used at the job site, remaining in place until the new 500kW emergency generator was installed.

[BACK TO INDEX](#)



replacing a roof after 127 years

NA Engineering Associates Inc. was retained by the County of Perth to provide our professional services throughout the removal and replacement of the slate roof for their Courthouse in Stratford. The building's original slate roof had been installed more than 120 years ago, in 1887. The project also involved some brick rehabilitation for the building's chimneys.

Custom Cupola has been acting as the contractor for the project. Construction commenced in June, with completion expected in the Fall of 2014.

Once completed, the new slate roof is expected to last for about a century. We are proud of our work on this iconic building and look forward to seeing this Perth County Landmark in good shape for years to come.

[BACK TO INDEX](#)





we provide life safety and code consulting

NA Engineering Associates Inc. provides a comprehensive suite of Life Safety and Code Consulting services intended to assist Architects, Owners, and Building Managers. We provide these same services for all stages throughout a building's life cycle, including: new construction, extension, renovation, and change-of-use.

Tremendous progress with building materials and construction methods has provided Architects and Owners with the capability to create newly innovative and dramatic structures. Progressive new Building and Fire Codes have allowed an equally innovative performance-based approach to applying Life Safety requirements, eliminating the need to sacrifice on aesthetics or cost.

Our Code Consulting staff work collaboratively with Architects and Building Owners to ensure that the Life Safety requirements of the Codes are incorporated into the designs.

We are able to create an array of alternative compliance documentation, including equivalencies, pedestrian movement studies, and life safety studies which identify compliance with Code intent.

Our services include: developing fire protection and life-safety alternative solutions, compliance reviews, audits, developing emergency procedures, and full design services related to protection systems.

Our staff also has extensive experience in the design of advanced, modern fire protection systems for all types of occupancies, including industrial, commercial and residential facilities.

Feel free to [contact us](#) for further information on these services.

[BACK TO INDEX](#)



parking lot construction & rehabilitation

NA Engineering Associates Inc. was recently retained to provide professional services for the construction and rehabilitation of a parking lot by CBRE (acting as project management service providers for Infrastructure Ontario).

The project will expand and rehabilitate an existing lot, currently able to accommodate approximately 400 cars, into a larger space for 550 cars. The project also involves rehabilitative work for an existing parking lot. Once the new lot area been completed, existing areas will be closed and updated.

The lot services 659 Exeter Road in London, an administration building that provides office space for a number of government offices including: the Ministry of Transportation, the Ministry of the Environment, as well as the Ontario Provincial Police.

Once completed, the lot will provide convenient, accessible parking for staff and visitors. It will include new storm drains, and high-efficiency lot lighting.

Reid & DeLeye Contractors Ltd. are acting as general contractor for the project. The estimated project cost is one million dollars.

[BACK TO INDEX](#)

the st. mary's town hall bell tower

The bell tower of St. Mary's Town Hall is the highest point of the surrounding town. It looks over a picturesque community from atop a prominent historic building.

NA Engineering Associates Inc. was retained to examine building elements that had appeared to be in mostly good condition from the ground. These included the building's slate roof, red tiles, windows, and flagpole.

Detailed examination from a bucket (attached to the end of a hundred-foot crane) revealed that after 125 years of outstanding service, Mother Nature had taken her toll on important aspects of the building's envelope. Based on the results of our firm's survey, some rehabilitative work was determined to be necessary.

[BACK TO INDEX](#)





a new facility for the stratford perth humane society

The Stratford Perth Humane Society was in need of a new animal welfare centre. Built in 1989, their older shelter on Douro Street was nearing the end of its service life, and did not meet the needs of the surrounding community.

The Stratford Perth Humane Society invested in an 8,500 square-foot warehouse space on Griffith Road in Stratford. The building will be re-made into the new Stratford Perth Animal Welfare Centre.

NA Engineering Associates Inc. was retained to provide building layout and design, as well as Civil, Structural, Mechanical and Electrical services for the project.

Once finished, the new Animal Welfare Centre will provide a pleasant experience for visitors considering an adoption and for the animals seeking a home.

It will provide bright, naturally-lit spaces for dogs, improved care spaces for cats, space for education programs & camps, and an intake facility that will allow for on-site emergency care.

NA Engineering Associates Inc. is proud to be the consultant on this fantastic community project.

[BACK TO INDEX](#)



we provide services for an OPG demolition project

Earlier this year, our firm was retained by E.S. Fox Ltd. to service a demolition project for Ontario Power Generation behind the fence line at the Bruce Nuclear Power Development Station in Tiverton, Ontario.

The project involves the demolition of three mothballed buildings and some ancillary structures. The on-site work began in June and Phase I will be completed in the winter.

NA Engineering Associates Inc. has been providing engineering support, as well as full-time site reviews and inspection throughout the duration of the demolition process. This has been done to ensure compliance with demolition procedures designed for E.S. Fox Ltd.

Our firm has also provided the design for some post-demolition safety items, such as cover plates and guardrails. We are also providing bracing design for a second-storey connecting space over a driveway that will remain in place after an adjacent building is demolished.

As with all projects delivered for Ontario Power Generation, the project is being completed to a highly refined set of standards for quality and safety. Phase I of the project is on-track for completion by the end of 2014.

[BACK TO INDEX](#)



charity golf tournament raises \$20,000

On a beautiful day in June, NA Engineering Associates Inc. held its Annual Charity Golf Tournament at The Stratford Country Club. The event was a complete success, raising more than \$20,000!

All proceeds generated from the 2014 tournament will benefit The Sunshine Foundation of Canada, The Stratford Youth Soccer Association, and other local charities. Since its inception, the tournament has raised more than \$350,000, all directed back to various charities in mid-Western Ontario.

Thanks again to all those who made this event a success, including the golfers, sponsors, donors, and volunteers. Your ongoing support is greatly appreciated.

[BACK TO INDEX](#)





"The **engineering** is secondary
to the **vision.**"

- Cynthia Ozick