

# NA ENGINEERING ASSOCIATES INC.

## NEWSLETTER | VOLUME 10 | ISSUE 4

### in this issue:

---

#### THE HELLENIC COMMUNITY CENTRE | [CLICK HERE](#)

We designed a contemporary addition for a beloved community centre in London.

#### MECHANICAL RENOVATIONS | [CLICK HERE](#)

Major mechanical renovations designed by our firm are wrapping up at the Kiwanis Community Centre.

#### QUALITY CIRCLE | [CLICK HERE](#)

Our firm kicks-off a new feature article for the newsletter. The first article of a series.

#### HITTING THE SLOPES | [CLICK HERE](#)

We conduct reviews of a ski resort's systems.

#### SHOWING OFF | [CLICK HERE](#)

See our design for a car dealership showroom.

#### A NEW ROOFING PROJECT | [CLICK HERE](#)

We plan upgrades for St. Joseph's Health Care.

#### DRESSING DOWN RAISES MONEY | [CLICK HERE](#)

The popular initiative celebrates a milestone.

#### THE FOOD DRIVE | [CLICK HERE](#)


Another year, another great food drive by the staff.

#### A LOOK BACK AT THE END OF 2014 | [CLICK HERE](#)

A look back at the firm's holiday celebrations.

---

NA Engineering Associates Inc.  
Stratford | London | Kincardine  
[www.naeng.com](http://www.naeng.com)



Proudly providing professional consulting services in  
Ontario for more than twenty years.



## a new addition for the hellenic community centre

NA Engineering Associates Inc. was recently retained by the Holy Trinity Greek Orthodox Community of London & Vicinity to design a new front entry and reception for the Hellenic Community Centre on Southdale Road.

We acted as Civil, Structural, Mechanical, and Electrical consultants; and provided planning and administration services from concept through to construction.

The design included a 5,700 square-foot addition with a new entry and gathering space. The building's façade was also updated for greater visibility.

The new spaces are designed to provide barrier-free access throughout the main floor. A grand mezzanine provides a multi-level gallery space for public events.

Exposed structural steel and mechanical systems in the building provide a welcoming space with a contemporary feel. The inclusion of wood and tile details allude to a happy marriage between old and new.

As part of the project, energy efficient lighting and mechanical systems were integrated with digital controls to automate systems and keep operational costs in check. Boilers, hydronic reheat, and rooftop units were also installed, creating an efficient mechanical system that is comfort-focused.

The finished project has provided a bright, welcoming and functional addition to the community hall.

[BACK TO INDEX](#)



## a major mechanical renovation for kiwanis community centre

NA Engineering Associates Inc. is nearing the completion of construction administration for a major mechanical renovation to the City of Stratford's Kiwanis Community Centre.

The project included replacement of all of mechanical equipment at this facility in a three-phased process. Old air handlers and boilers were operating inefficiently by today's standards. The City decided to overhaul these systems, to reduce the facility's operating and maintenance costs.

Two energy-efficient packaged air handling units were installed, as well as two modern boilers that serve the building's radiant heating system. A new fan coil and new exhaust were also installed as major equipment components. A Variable Air Volume system and new controls are provided throughout the facility.

As with many renovation projects, existing conditions provided some challenges, but these were overcome through careful planning and coordination among the project team and owner.

The Kiwanis Community Centre is a beloved facility, and the shut-down period for construction was kept to an absolute minimum.

[BACK TO INDEX](#)



## a new feature for the newsletter, welcome to quality circle

This article marks the first entry in Quality Circle, which will become a regular newsletter feature from this point onward. We want to highlight stories, observations, and lessons that are relevant to our work and the way we conduct our business. For this article, we want to start by describing ISO 9001:2008, the standard to which we conduct consulting engineering services.

NA Engineering Associates Inc. has been ISO 9001-registered since 2006. Many see the ISO 9001 banner and logo flying outside of manufacturing facilities, but not everyone knows what it means.

In a nutshell, the abbreviation 'ISO' stands for the International Organization for Standardization. The suffix of '9001' specifically represents Quality Management. ISO 9001 registration represents the lengths that a company goes to in order to: meet customer requirements, comply with industry-related regulations, enhance customer satisfaction, and achieve continual

improvement in the delivery of its product or service. As a designation, ISO 9001 is primarily concerned with the way an organization completes its work. It is not a standard for a product. It is a standard for a company's working process. Companies that obtain ISO 9001 registration have an accredited, external body that audits their management, and verifies that it conforms to the demanding requirements specified in the ISO 9001.

For more information on ISO 9001:2008 [CLICK HERE](#).  
For more information on NA Engineering Associates Inc. and our ISO-9001 certification: [CLICK HERE](#).

[BACK TO INDEX](#)

## assessing power distribution at a ski resort

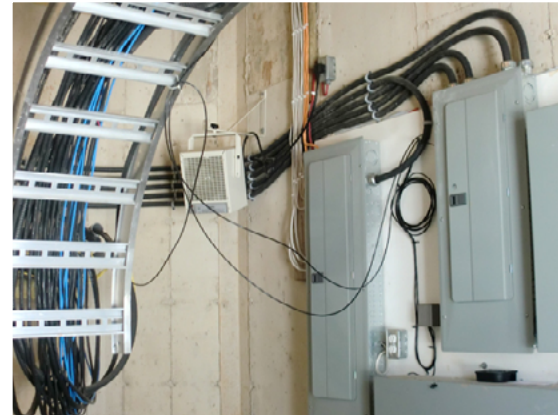
Located near Collingwood, the Osler Bluffs Ski Club is a major part of the Blue Mountain alpine skiing resort. It's on the Niagara Escarpment, and is a major destination for skiers from all over the province.

The Club retained our services to evaluate the condition of existing low voltage and medium voltage distribution systems that service the Chalets and Lift Stations at the Blue Mountain resorts in Collingwood.

The scope of work included review of the current condition of existing power distribution systems and addressing issues related to hydro poles and clearance requirements from building structures.

Our firm conducted an evaluation and reported on the best alternative solutions for future upgrades (based on advantages, disadvantages, risks and costs associated with each option).

[BACK TO INDEX](#)



## designing a new showroom

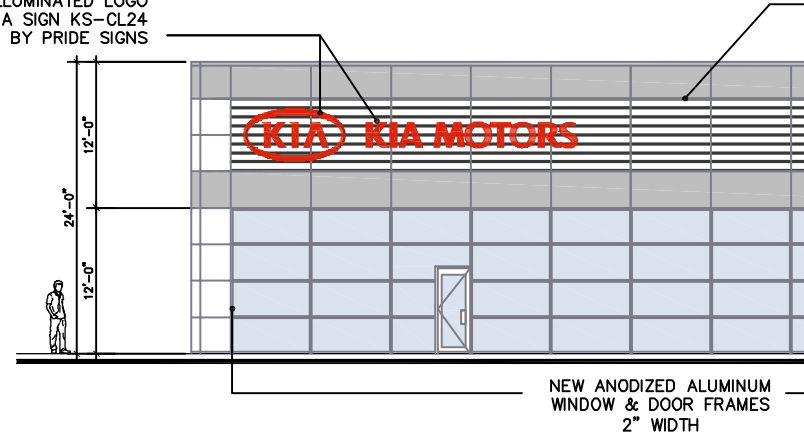
Our firm was recently asked to design a renovation to an existing car dealership, accommodating KIA Motors.

Our firm acted as prime consultant, providing structural, mechanical, and electrical consulting services. On the project, we have also worked with an architectural finishes consultant chosen by KIA.

The project's design included the replacement of an existing structure with a brand new showroom. Construction is scheduled to commence in the Spring with completion in the Fall of 2015.

[BACK TO INDEX](#)

KIA MOTORS CHANNEL SIGN  
AND 4'-5" ILLUMINATED LOGO  
FASCIA SIGN KS-CL24  
SUPPLIED BY PRIDE SIGNS





## updating a roofing system for a health care provider

St. Joseph's Health Care (London) is one of the pre-eminent health care providers in the city. Their main campus on Grosvenor Street is a complex mix of older facilities and new additions or renovations built over many decades.

A small number of the main campus' roofing sections had exceeded their anticipated life-expectancy and required replacement.

NA Engineering Associates Inc. was retained to undertake a detailed investigation, determining the composition of the roofing systems that were to be removed and prepare specifications and tender documents for the new roofs.

Interestingly, one area of the campus still had its original 1950s roofing system, still in place beneath another existing roofing system.

Once the re-roofing is complete the vast majority of this complex will be well-serviced with up-to-date, high performance roofing systems.

[BACK TO INDEX](#)



## dressing down raises many dollars

Every week for the past four years, our staff has continued the tradition of Dress Down Fridays: making a two-dollar donation in return for the choice to dress casually.

Since 2011, the initiative has raised more than \$15,000 for a variety of charities. Last year, the staff raised \$2,800, which was matched by the company (bringing the yearly total to \$5,600!).

The money will be donated to The Sunshine Foundation of Canada: Dreams for Kids, an organization providing individual support to children with severe physical disabilities and life-threatening illnesses.

We are proud to support this worthy cause and very proud of our staff for their ongoing participation!

[BACK TO INDEX](#)







## staff supports the holiday food drive

For the seventh year running, our firm had an overwhelming response for our Holiday Food Drive.

Staff and their families contributed money (which was matched by the company), raising just over \$1,200 for food banks in Stratford, London, and Kincardine!

In addition to their donations, our staff also did the shopping, packing carts with food to be donated. We are very proud of their efforts, and proud to support such an important charity.

Remember to support your local food bank year round!

[BACK TO INDEX](#)

## a look back at the end of 2014

Towards the end of last year, our firm celebrated our annual Christmas party with friends and clients. The event was (as always) a great success, with wonderful food, fantastic conversation, and good company. We look forward to seeing everybody for this Christmas tradition next year.

Continuing with the holiday celebrations, our staff got together for a review of the year, a look forward, and our annual staff luncheon buffet. Lunch and the annual 'Secret Santa' gift exchange were all part of the last day before the holidays. It was a great opportunity to get together and share some holiday food and companionship.

[BACK TO INDEX](#)





**“We should use our imagination  
more than our memory.”**

**-Shimon Peres**