

NA ENGINEERING ASSOCIATES INC.

NEWSLETTER | VOLUME 10 | ISSUE 7 | WINTER 2016

in this issue:

[A NEW MARKHAM OFFICE | CLICK HERE](#)

Big news! The firm is expanding its presence!

[WORK WITH BRUCE POWER | CLICK HERE](#)

The company signs a Master Service Agreement!

[WORK IN THE REGION OF WATERLOO | CLICK HERE](#)

We complete some building condition assessments.

[SEISMIC CAPABILITY ENGINEERS | CLICK HERE](#)

Two firm leaders receive a unique designation.

[WORK WITH BELL CANADA | CLICK HERE](#)

An overview of our work with an important client.

[THE PERTH COUNTY COURTHOUSE | CLICK HERE](#)

The company helps replace a century old roof.

[THE FIRM RECEIVES A LOVELY NOTE | CLICK HERE](#)

A 'thank you' so nice that we had to share it.

[FIRM LEADERS VISIT VIENNA | CLICK HERE](#)

Members of the firm represent the CNA overseas.

[HOME BUILDERS CONFERENCE | CLICK HERE](#)

Leaders from the company attend an Ontario conference.


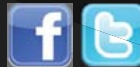
[WEARING PURPLE FOR AWARENESS | CLICK HERE](#)

The firm participates in prostate cancer awareness.

[THE FIRM'S ANNUAL FOOD DRIVE | CLICK HERE](#)

Another year, another successful food drive.

NA Engineering Associates Inc.
Stratford | London | Kincardine | Markham
www.naeng.com



Proudly providing professional consulting services in
Ontario for more than twenty years.

the firm opens a new office in markham

NA Engineering Associates Inc. is proudly expanding its presence in the province. On January 4th, 2016, the company is officially opening a new office in Markham, Ontario!

The new office will support our growing consulting engineering activities within the Greater Toronto Area and in Eastern Ontario. The Markham office will be the firm's fourth (counted with our other offices in Stratford, London, and Kincardine).

This investment is one aspect of our larger commitment to providing clients with increased local technical expertise. Our Markham office will put us closer to many important clients that we work with on an ongoing basis.

[BACK TO INDEX](#)



the firm signs a three-year master service agreement with bruce power

In mid-December, NA Engineering Associates Inc. signed a three-year Master Service Agreement with Bruce Power.

The agreement will provide an additional level of continuity to the firm's work at Bruce Power, which has been constant and ongoing for almost fifteen years, supported largely from the firm's Kincardine office (specifically opened to support projects at Bruce Power's nearby Tiverton site).

Our company has already completed a variety of successful major projects at Bruce Power, including the recently completed Fire Training Facility (for which NA Engineering Associates Inc. acted as prime consultant), and the in-station fire protection consulting contract (which is ongoing through 2016).

We have also supported Bruce Power with professional engineering services, roof consulting services, code consulting, and condition assessments.

Our firm is thrilled to continue our successful working relationship with Bruce Power, and look forward to supporting them on future projects.

[BACK TO INDEX](#)



assessing buildings for the region of waterloo

The Region of Waterloo operates and maintains an impressive portfolio of buildings, including: major administrative facilities, not-for-profit housing projects, as well as simple ancillary facilities (like works yards). As such, it is critical for the Region to understand the current condition of its facilities and be able to plan for necessary maintenance or required upgrades.

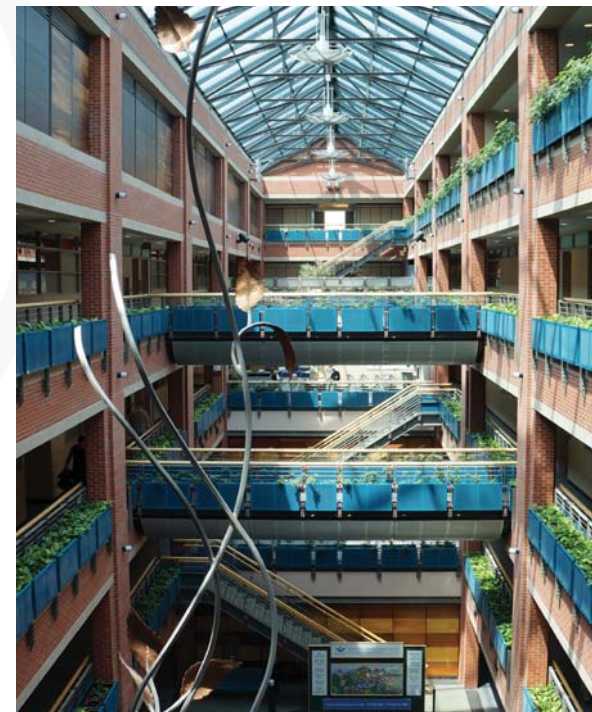
NA Engineering Associates Inc. recently completed a number of building condition assessments for the Region, providing input that would be incorporated into the Region's sophisticated Building Asset Management system to assist with future planning.

Part of our assessment included development of a detailed inventory of all major building systems and components, including interior finishes, building structure, site appurtenances, exterior wall systems, roof systems, mechanical and electrical components, as well

as elevating devices. This inventory was created for input to the Region's asset management system. Classification of the different building systems and components followed the Uniformat 2010 system.

Building condition assessments have been completed at the following sites operated by the Region: the Social Services and Public Housing Administration Building, the Regional Headquarters Building, Sunnyside Home/Supportive Housing as well as the North Dumfries Works Building.

[BACK TO INDEX](#)



two firm leaders become seismic capability engineers

Last May, NA Engineering Associates Inc's Nick Aroutzidis and Larry Walton travelled to Alexandria, Virginia to attend the Seismic Qualification User Group (SQUG) A46 Walkdown Screening and Seismic Evaluation Training Course in Alexandria, VA.

Following their successful completion of the training course, Nick and Larry (back row, sixth and third from right respectively) are now accredited Seismic Capability Engineers. This permits them to perform and audit seismic evaluations for safe shutdown equipment in nuclear facilities that meet and use the Seismic Qualification User Group protocols.

The Seismic Qualification User Group is a power-utility owners group whose mandate involves the development

of the use of earthquake experience data as a cost-effective method for seismic qualification of equipment. The group has also cultivated an experience-based method in seismically qualifying equipment used within nuclear power plants.

Both major nuclear utility operators in Ontario have applied these techniques to their facilities.

[BACK TO INDEX](#)





working with bell canada on projects all over ontario

Bell Canada has a large property portfolio extending all over Ontario (which is managed by SNC Lavalin O&M Solutions Inc.). Several of these properties are prominent structures located along major roadways in highly visible areas, others are made to blend-in with various neighbourhoods throughout the province.

NA Engineering Associates Inc. recently completed electrical engineering studies at fifteen different Bell Canada buildings located throughout southwestern Ontario and the Greater Toronto area, though this is only one of many projects our firm has covered working for Bell Canada.

Bell Canada's buildings require regular maintenance to ensure that the sensitive equipment housed within them is never jeopardized or exposed to adverse conditions. NA Engineering Associates Inc. has helped support this effort in a number of ways for several years.

Our company has provided Bell Canada with consulting services for a variety of repairs and improvements, including:

- building envelope corrections
- structural building reviews and reports
- mechanical system improvements and upgrades
- electrical upgrades
- exterior door replacement
- replacement of main transformers
- shaft wall / fire separations on building interiors during upgrading of equipment
- review of generator exhaust stacks
- roof consulting.

We are proud of our work with Bell Canada, and hope to continue working with them for many years to follow.

[BACK TO INDEX](#)



a new slate roof for a beautiful building

NA Engineering Associates Inc. was retained by the County of Perth to provide roof consulting services for the historic Perth County Courthouse in Stratford. The Courthouse had originally opened on May 9th, 1887.

The original slate tile roof remained in place until just recently (serving the facility for over 128 years). The first part of the project involved a condition survey of the existing roof. The original roof had well-exceeded its anticipated life expectancy. Many different roofing type applications/materials were explored for replacement but slate tile was ultimately the recommended replacement material.

Detailed specifications and drawings were prepared and the slate tile roof replacement was publicly tendered.

Original flashing details were replicated using lead coated copper and the new slate tile coursings were installed to match the original sequencing. Careful planning was effected to ensure the Court proceedings could carry on throughout the duration of slate removal and installation. While roofing activities progressed, masonry repairs and brick replacements were completed in areas that could take advantage of the scaffolding erected for the roof replacement.

The final copper nail was driven into the last piece of slate tile in early 2015. The new slate tile roofing system maintains the beauty of the facility and is anticipated to serve the building for at least another century.

[BACK TO INDEX](#)

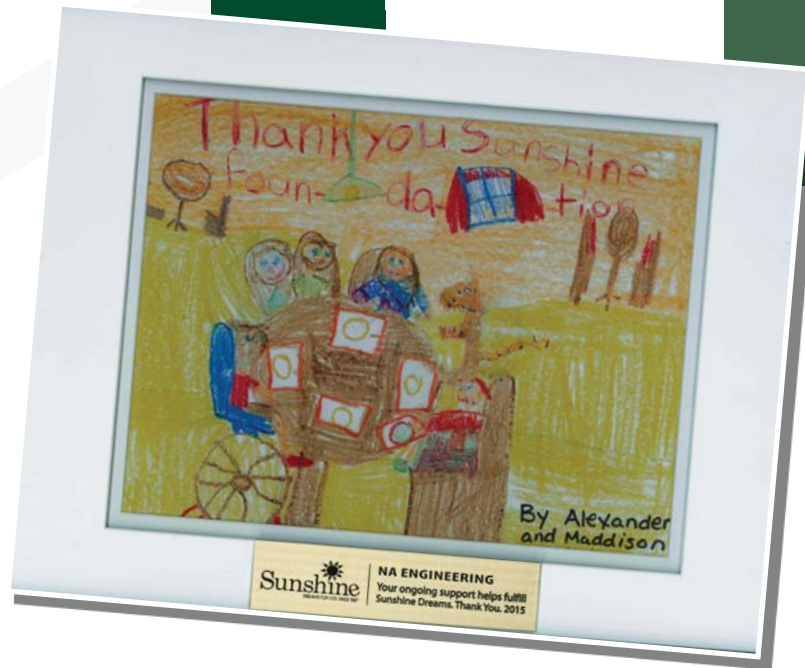
the company is given a charming ‘thank you’

Doing good deeds for others is often its own reward, but sometimes an especially memorable ‘thank you’ can really make a person’s day.

The firm was given an incredible thank you note following a \$5,000 donation made to the Sunshine Foundation (the money was raised as part of the firm’s annual golf tournament). The card is very thoughtful and we love the artwork.

The Sunshine Foundation of Canada has operated since its founding in 1987. The Foundation’s mission is to “make dreams come true for children living with severe physical disabilities or life-threatening illnesses.”

[BACK TO INDEX](#)



company leaders attend vienna mission with the CNA

A delegation of Canadian Nuclear Association (CNA) representatives (led by CNA President John Barrett) recently attended the International Atomic Energy Agency (IAEA) General Conference in Vienna, Austria.

The conference was a great opportunity for Canadian nuclear representatives to network with foreign governments, national nuclear power agencies, national research bodies and institutes, and representatives from private and public companies in the nuclear technology and construction fields.

The Canada booth was a big hit, planting the Canadian flag in a high-traffic zone and even attracted IAEA Director General Yukiya Amano.

Pictured at the right are the Canadian nuclear industry team including NA Engineering Associates Inc.'s CNA board members Nick Aroutzidis and Eddie Saab (Front row, second and third from the left) accompanying DG Amano (fourth from right) in the IAEA headquarters.



[BACK TO INDEX](#)

the ontario home builders conference

Leaders from the NA Group of Companies recently attended the Ontario Home Builders Annual Conference.

John Hood Tidman of Arky Designs and Peter Moreton of NA Geomatics were both in attendance for the event representing the Stratford and Area Builders Association, supporting the OHB's new President (John Meinen), who also runs a Stratford business.

Both Hood Tidman and Moreton are active within the Stratford and Area Builders Association, with Moreton currently sitting on that organization's board.

[BACK TO INDEX](#)





the firm wears purple for cancer awareness

On November 13th, the company collectively dressed in purple for World Pancreatic Cancer Day, an international event intended to both raise funds and awareness to combat pancreatic cancer.

NA Engineering Associates Inc. is proud to support this worthwhile awareness initiative and proud of our staff for their great job in participating!

[BACK TO INDEX](#)





the annual food drive is all tallied-up

One final bit of news, another year has come-and-gone, and so too did another annual company food drive.

This year's food drive was a complete success. In total for all three offices (including the firm's matching donations) we were able to raise over \$1,800 to benefit local associations.

Thanks to everyone for all of their efforts to make this year's food drive a great success.

[BACK TO INDEX](#)



*The management and staff of NA Engineering Associates Inc.
would like to wish our Clients, Colleagues and Friends a Happy
New Year and all the best for 2016.*

