

NA ENGINEERING ASSOCIATES INC.

NEWSLETTER | VOLUME 10 | ISSUE 6 | FALL 2015

in this issue:

WE GO WAY NORTH | [CLICK HERE](#)

A project that goes well beyond the Arctic Circle.

A PROJECT WITH CANDU | [CLICK HERE](#)

We contribute to a significant nuclear project.

A GROUND-BREAKING EVENT | [CLICK HERE](#)

We attend ground-breaking for a new EMS facility.

NA GEOMATICS TURNS FIVE | [CLICK HERE](#)

A happy anniversary to NA Geomatics.

ON BUSINESS DEVELOPMENT | [CLICK HERE](#)

A special feature by Eddie Saab.

A RECENT CIVIL PROJECT | [CLICK HERE](#)

Our firm provided civil design for a new academic building on Western's campus.

ARKY DESIGNS LTD | [CLICK HERE](#)

A profile of one of the longtime members of the NA group of companies. Read all about it.


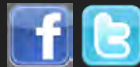
THE FIRM'S GOLF TOURNAMENT | [CLICK HERE](#)

Braving some light rain, the firm and our friends got together to raise money for worthy causes.

A LITTLE GREEN BENCHMARK | [CLICK HERE](#)

We celebrate a small (but noteworthy) milestone.

NA Engineering Associates Inc.
Stratford | London | Kincardine
www.naeng.com



Proudly providing professional consulting services in
Ontario for more than twenty years.



our work takes us (almost) to the north pole

Canadian Forces Station (CFS) Alert is the northernmost permanently inhabited location in the world. The station is sited about 800 kilometers south from the geographic North Pole, on the northern shore of Ellesmere Island.

The station maintains signals intelligence and geolocation facilities to support Canadian military operations, as well as High Frequency and Direction-Finding facilities that support Search and Rescue operations. The site also includes an Environment Canada weather station and an Arctic Research Facility.

Our firm recently led a multidisciplinary team of fire protection professionals to complete condition assessments of all fire protection systems in the CFS Alert facility including: detection, sprinklers, carbon

dioxide, clean agent and wet chemical suppression systems. In addition to providing coordination and oversight of all testing activities, NA Engineering Associates Inc's personnel completed room integrity testing in order to complete assessments on the performance of CO₂ suppression systems.

The trip proved to be an unforgettable journey for our team, given the unique and remote character of the site. Alert is a self-sufficient site and is technically closer to Moscow than it is to Ottawa. On a clear day, it is even possible to see the coast of Greenland (a mere 56 kilometers away).

[BACK TO INDEX](#)

a new project for candu energy inc.

NA Engineering Associates Inc. is supporting Ellis Don for a project at Candu Energy Inc's Radiological Zone 3 Nuclear Laboratory (a facility being built within an existing building in Mississauga).

The project encompasses more than 4,500 square feet, used for radiological tool cleaning and maintenance. It includes: a decontamination facility, an exit monitoring room, as well as a Zone 2 Entrance room. On the project, our firm is responsible for the design of structural, mechanical / HVAC, plumbing, air systems, electrical, and room layouts.

Interestingly, the project includes specific mechanical systems for tritium extraction via condensation removal. The project also includes fire-rated rooms conforming to nuclear codes and standards. Completion of construction is expected for early summer next year.

[BACK TO INDEX](#)



ground-breaking for a new EMS facility

NA Engineering Associates Inc. recently attended a ground-breaking ceremony for a new Emergency Medical Services Headquarters in Stratford.

Our firm acted as the owner's consultant for the new facility, completing preliminary design requirements and overseeing all aspects of the project through to the completion of construction. The facility is being delivered for the County of Perth. It is currently under construction following much ongoing work by both the County and the project team.

When completed, the building will contain eight ambulance bays, offices, paramedic crew rooms, and a training facility. The building was also designed to meet post-disaster standards. The project is projected to be completed in the spring of next year.

[BACK TO INDEX](#)



a member of the NA group of companies turns five

NA Geomatics Inc. (one of the NA group of companies) has officially celebrated its fifth anniversary, originally founded in September of 2010. The firm has also recently expanded its technical capabilities, purchasing a new R10 Trimble GNSS System, that allows our team to reach previously inaccessible areas in single trips, and to collect more data efficiently and effectively.

Through the power of Google Earth and Geographic Information Systems, NA Geomatics has also created an up-to-date 'network' file that can be loaded into Google Earth with the simple "click-of-a-button". This tool shows where our team has already completed work. It provides a very user-friendly representation of the extent of our survey work, and provides detail regarding; type of work completed, geographic fabric, job number, and directions.

Over the past five years NA Geomatics Inc, has completed a wide variety of projects, for an equally diverse range of clients (each with their own specific requirements and requests).

The company provides everything from cadastral (legal) surveys to topographical and engineering surveys, as well as construction layout projects.

The team at NA Geomatics continues to grow and take on new and exciting projects. It's been a great first five years, and we're excited for the years to come . . .

[BACK TO INDEX](#)



NA Geomatics Inc. was hired by Acapulco Pool Ltd. to provide exact lane dimensions and 'parking' positions for new bulk-heads in the Canada Games Aquatic Centre. NA Geomatics Inc. used a S3 robotic total station to undertake the necessary tasks.



a special article on business development, by eddie saab

In July, a notification went out to the friends and clients of NA Engineering Associates Inc. advising that I would be joining the team to focus on business development. A question that often arises about the role is ‘what does a business development person actually do?’

Very few job titles raise as much confusion as ‘business development’. Some say it’s about sales, partnerships, or marketing. The answer includes all of the above. In simplest terms, the role is to develop business for our firm. However, confusion about specifics arises from how one goes about doing this; since different individuals and firms have employed different approaches in the past. To date, the most concise definition I have found is this: “business development is the creation of long-term value for an organization from customers, markets, and relationships.”

We will achieve this through strategy, sales, and relationship management, with an added complementary approach of: “you, me and us”

You – If you are reading this, you are likely on staff, a client, or a business partner of the firm. I have quickly learned there is an abundance of talent in all these areas and by leveraging the expertise in each of you – new opportunities and successes will follow.

Me - It is imperative that I understand our capabilities, strengths, and most importantly, any areas for improvement. This is why I have invested time in reviewing proposals, project documentation, soliciting feedback from our clients, and in hosting lessons-learned meetings. I will continue to observe and ask questions to help with my learning.

Us – The only guaranteed path to further success is together. True innovation occurs when we work together across our own boundaries, finding ways our collective capabilities can overcome any challenges. Teamwork is the best way to live the motto: “Reliability to Build On.”

[BACK TO INDEX](#)

a new civil project on western's campus

NA Engineering Associates Inc. recently provided the site services and drainage consulting for a new academic building at Western University (the project is currently under construction).

Working for the project's architect: architects Tillmann Ruth Robinson, our firm collaborated closely with the owner and the design team to integrate this multi-level building into a very compact and sloped building site.

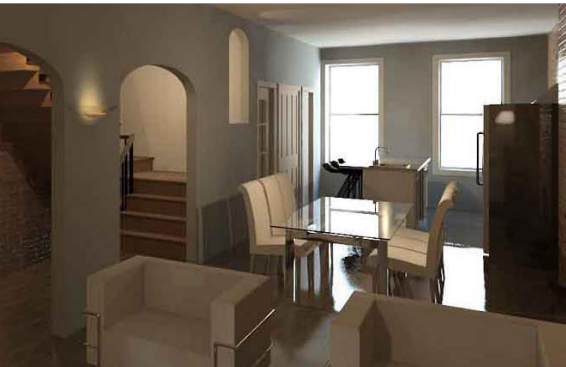
Tucked into the corner of Huron and Lambton Drives on the University's main campus, it was necessary to provide grading and drainage to suit the abutting, higher elevations to the north and the existing, lower elevation infrastructure of neighbouring buildings on the south and west sides.

As with most in-fill construction projects, designing a stormwater management system to comply with the municipality's requirements presented some challenges. Our solution was to design a series of underground stormwater retention tanks, located within the building's courtyard, thus not encumbering the design of the beautiful outdoor spaces envisioned by the architect.

The infrastructure adjacent to the site was assessed, ensuring adequate capacity for the storm sewer, sanitary sewer and water services. Designing the building's new service connections, we coordinated with designers of an upgrade project to the service main in the adjacent roadways (planned concurrently with this project).

[BACK TO INDEX](#)





a profile of ARKY Designs Ltd. one of the NA group of companies

For more than 25 years, ARKY Designs Ltd. has provided innovative solutions to complex design tasks. It is a full-service Design, Drafting and Rendering firm, working from Stratford, London, and Kincardine. ARKY Designs Ltd. has completed a wide variety of projects for builders, homeowners, developers, architects, engineers, and designers.

ARKY Designs Ltd. offers a range of services and expertise in residential and small-building design and drafting. Since ARKY Designs Ltd. was created in 1989, the firm has specialized in providing residential designs and construction documents. Our areas of expertise range from decks, garages, and additions to single and multi-family residential buildings. ARKY Designs Ltd. is also BCIN certified with the Ministry of Municipal Affairs and Housing to provide design services for residential and commercial buildings up to 6,460 square-feet in building area.

The Company utilizes state-of-the-art design and modeling software, enabling us to provide computer generated design & construction documents. The firm's services include:

- Sketches & design documents
- Interior building layout & space planning
- Building permit & construction document packages
- Working drawings & specification packages
- Static 3D modeling, massing & renderings
- 3D building animations
- Presentation graphic & marketing packages

It is our role is to assist clients in successfully realizing their project goals. For more information regarding the company, please visit www.arkydesigns.com.

[BACK TO INDEX](#)



the firm celebrates its annual charity golf tournament

This year NA Engineering Associates Inc. held its annual golf tournament in London, Ontario at the Highland Country Club. Despite a little bit of weather towards the end of the day, the event was a complete success!

A big 'thank you' goes out to everybody who contributed to the event: clients and colleagues of the firm, staff members, volunteers, and friends. Since its inception, the tournament has raised more than \$350,000, which is all directed towards various charities around mid-Western Ontario.

Pictured at the lower left is NA Engineering Associates Inc's founder, Nick Aroutzidis, presenting part of this year's proceeds to Leo Larizza, founder of the Teresina Larizza Charities Foundation (one of the charitable organizations that the golf tournament supported this year).

[BACK TO INDEX](#)

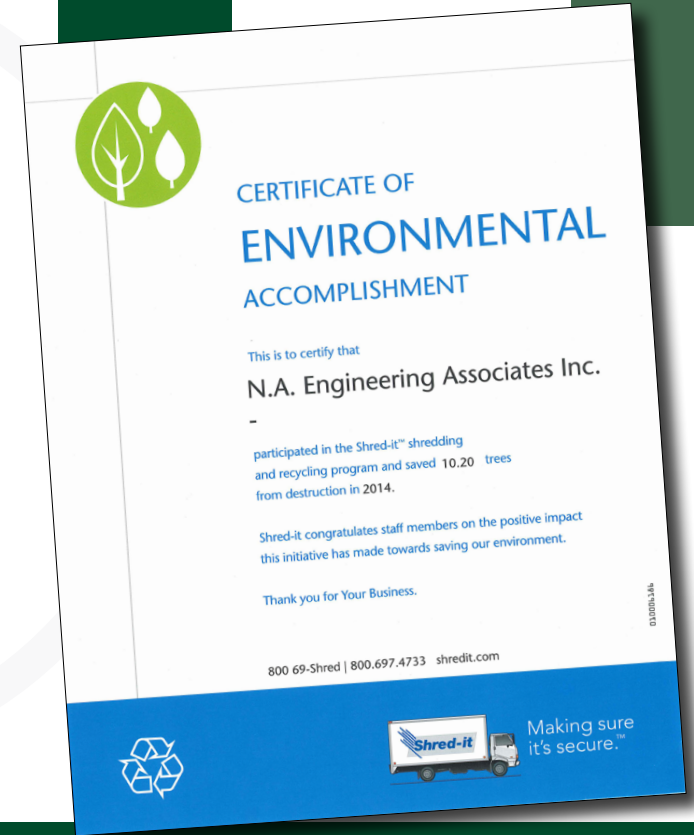


a small (but positive) environmental accomplishment

NA Engineering Associates Inc. is committed to business practices that respect the environment, and reduce unnecessary waste of all types (as an example of this type of practice, you're currently reading a purely digital newsletter). The firm has recently marked a small but significant accomplishment related to these efforts, and we think that's worth celebrating.

In 2014, NA Engineering Associates Inc. participated in a recycling program run by "Shred-It" and saved the equivalent of 10 trees from destruction. It's a minor contribution (and not the only measure our firm is taking to respect the environment), but we're pleased to have prevented unnecessary waste while at the same time responsibly managing documents in a secure fashion.

[BACK TO INDEX](#)





“Seek the lofty by **reading, hearing and seeing great work** at some moment every day.”

- Thornton Wilder